



HIGHLINE

Elevating to new heights...

Combining sleek black framework, and the option of glass panelling or open mezzanines. Available in 5m components, full structures can be custom built to be as high or as wide as needed.

Fully customisable with façading, walling, signage, lighting, audio and visuals. The Highline contributes to our focus on low-carbon impact events with efficient build times, portability and reusability.

Common Uses:

- Large Events
- Exhibitions Pavilions
- Activations
- Private Functions
- Corporate Dining
- Product Launches
- Fashion Shows
- Media Centres



Black Powder Coated Frame



In Track Liner Systems



3.6m Leg Height



Cube Style



Glass Wall And Sliding Doors



Veranda And Mezzanine Options



In-Built Gutter System



Disabled Access Ramps & Stairs

AVAILABLE IN 5M X 5M & 2.5M X 5M GRIDS MODULAR MULTI LEVEL

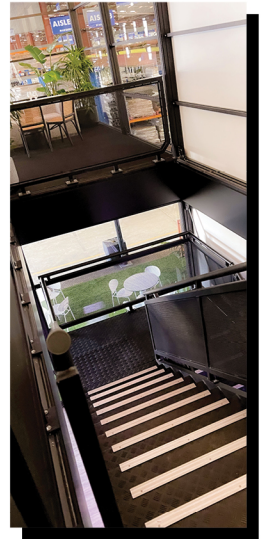


CUSTOMISE

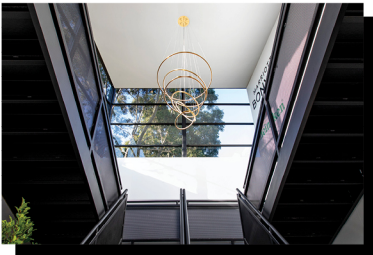
WALLING



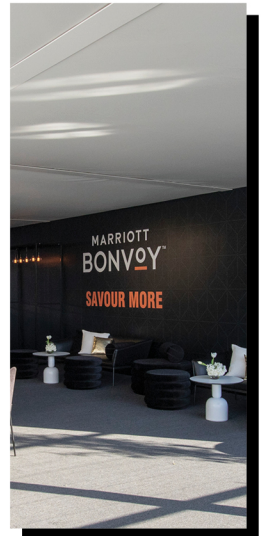
MODULAR COMPONENTS



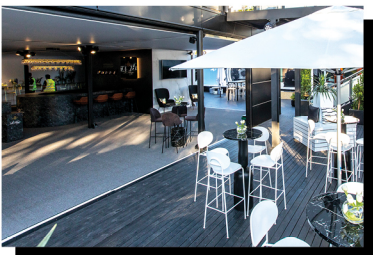
RIGGING



SIGNAGE



FLOORING



HIGHLINE



ELEMENTS

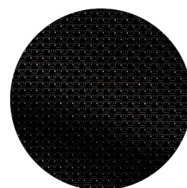
Outdoor blind

Prepared for all weather...

Instantly transform the feeling of your event with the Elements blind system. Create a sense of seclusion and sanctuary or bring the outdoors in.

The track guided system with centre-lock-release allows the blind to be left at any height and prepares you for all weather situations, keeping the heat out during summer and locking the warmth in during winter.

BLACK MESH



CLEAR PVC



BLACK PELMET



Black Mesh

- Up to 99% UV block
- Up to 96% wind and rain block
- Significant reduction in sun glare
- Allows airflow
- Outdoor feeling without the conditions

PVC

- Up to 93% UV block
- Complete blockout of wind, dust, rain and debris
- Uninterrupted views
- Optimised for temperature management



*Available for our Highline & B-Series structures only

HIGHLINE



Contact us today.
For more information or a quote:
03 9429 8688 | info@harrythehirer.com.au