



THE ATRIUM



Harry
the hirer®



A TEMPORARY STRUCTURE LIKE NO OTHER,
THE ATRIUM MARQUEE IS THE FIRST OF ITS KIND
IN THE AUSTRALIAN EVENTS LANDSCAPE.



EXCLUSIVE TO HARRY THE HIRER

Architecturally designed in-house at Harry the hirer, The Atrium combines imposing glass walls and a crystal clear ceiling – all contained within a black powder-coated aluminium frame.




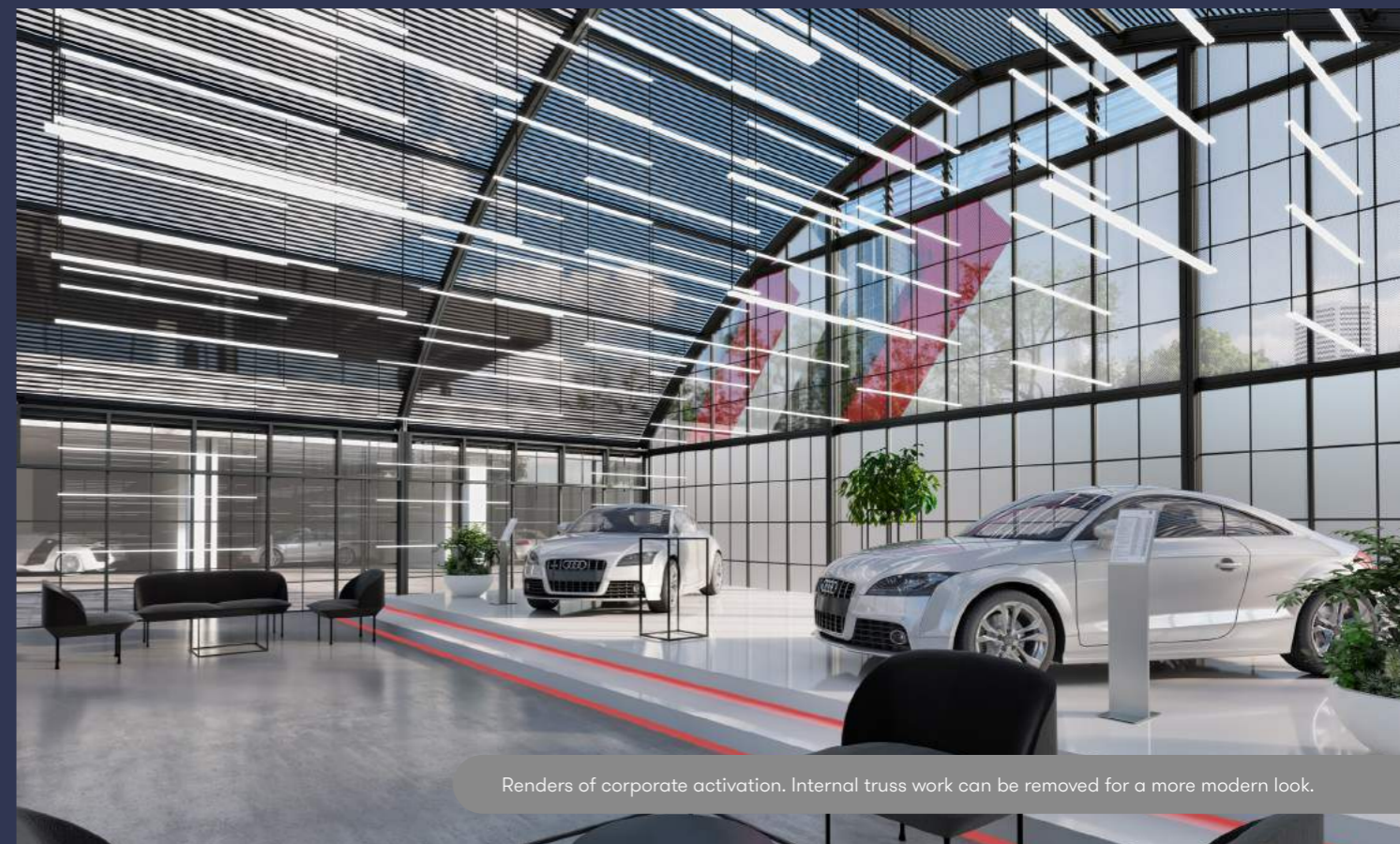
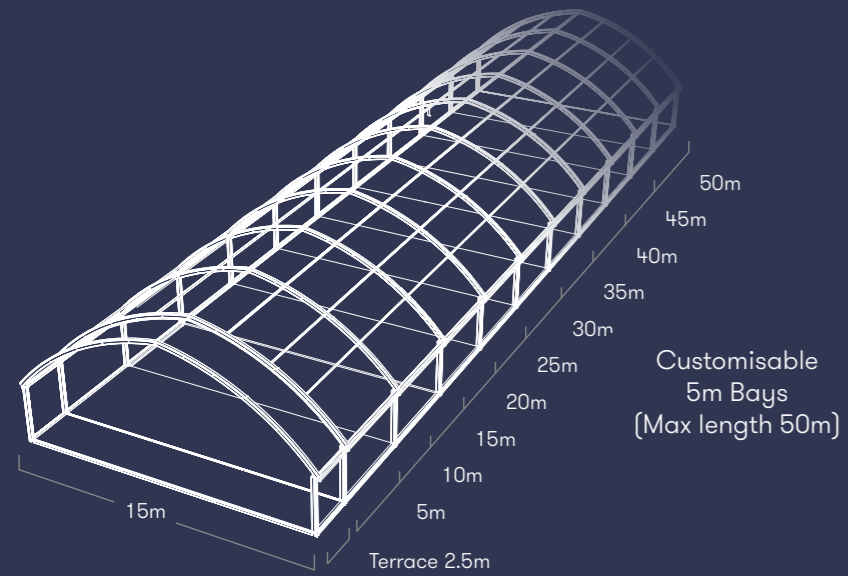
THE TECHNICAL DETAIL

FEATURES

-  Cathedral Roof with 7.5m Apex
-  Circular Truss with 'Tiara themed' fretwork
-  Panoramic Glass Windows
-  2.5m Terrace
-  3m High Walls
-  Glass Sliding Doors
-  Louvre Panelling

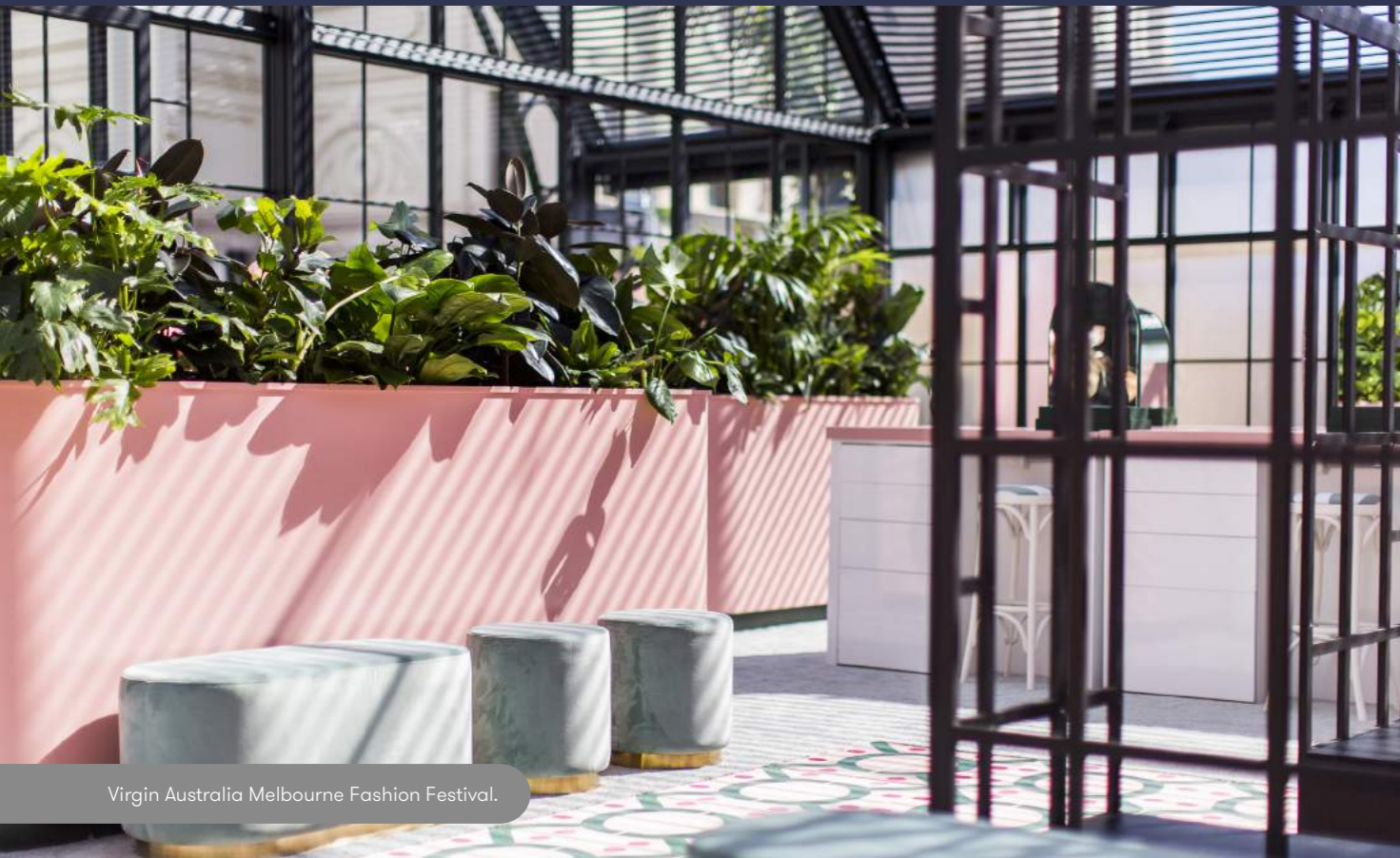
SIZING

-  15m wide gable, with customisable length in 5m bays (maximum length 50m)

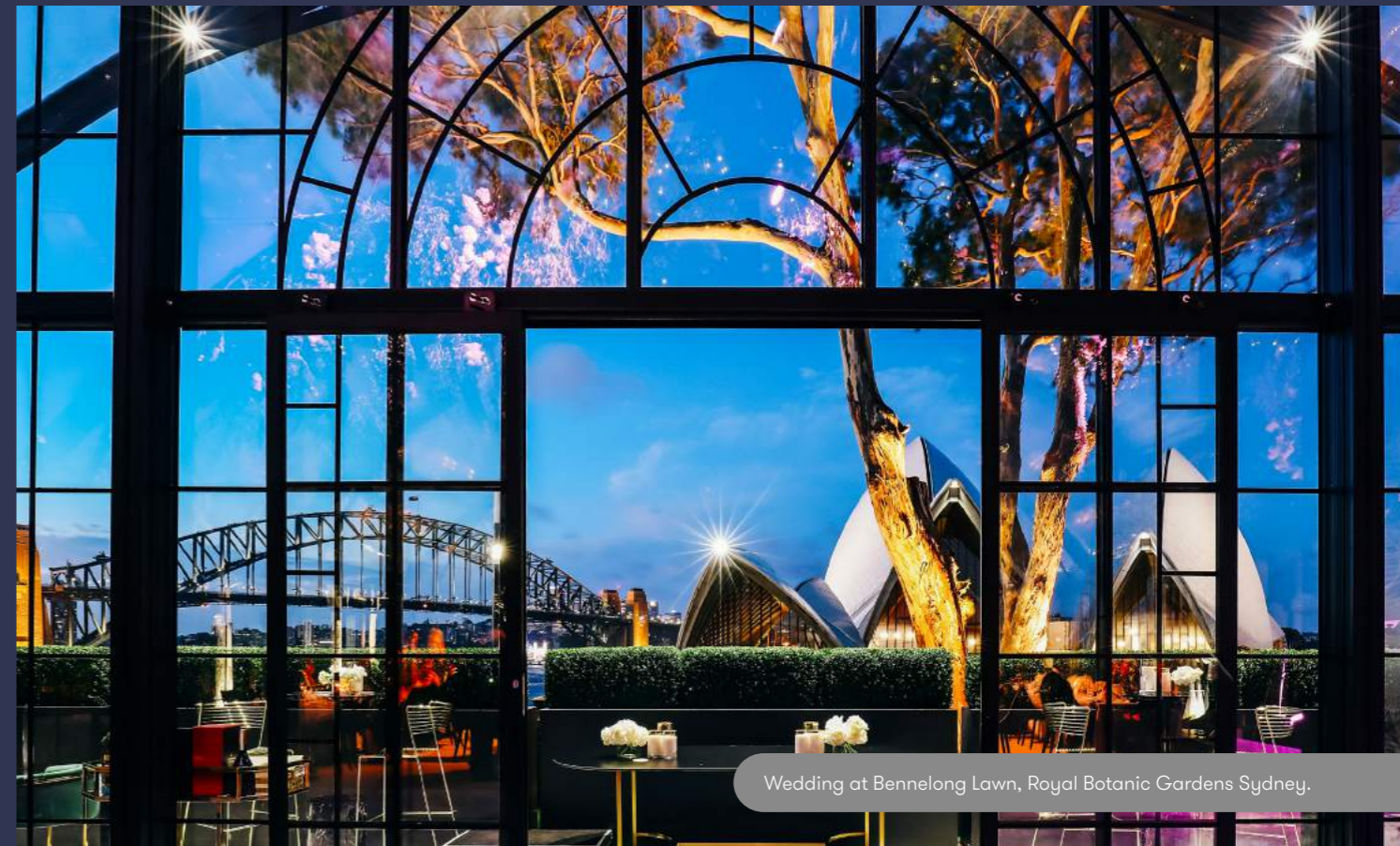


Renders of corporate activation. Internal truss work can be removed for a more modern look.

AS SEEN IN



Virgin Australia Melbourne Fashion Festival.



Wedding at Bennelong Lawn, Royal Botanic Gardens Sydney.



Corporate event at Gardens House, Royal Botanic Gardens Melbourne.



Wedding at a private property, Victoria.



PRIVATE EVENTS AND MAJOR INSTALLATIONS
BECOME TRULY SPECIAL SPACES WHEN HELD
INSIDE THIS ICONIC MARQUEE.



**Harry
the hirer[®]**

harrythehirer.com.au

MELBOURNE

☎ 03 9429 8688

SYDNEY

☎ 02 9666 8699

@harrythehirer